

NORTHPINE GROWING STRONGER

12 Sandford Rd
Ruakaka
RD1
Whangarei 0171

Phone:
(09) 432-7503

Fax:
(09) 432-8631

Mobile:
(021) 0233 2267

E-mail:
office@ruakaka.school.nz

Web:
www.ruakaka.school.nz

Find us on Facebook:
Ruakaka Primary
School Friends

Website
www.ruakaka.school.nz



Have you found dub dub yet?? If so fill in a form at the office and pop it in the box.



This month's winner was
Javahna Barrowman

NOTICES

Show day is the 20th October. If you are bringing an animal, please make sure you have returned your completed form to the office asap. Can we have any show day cups returned to the office by the 15th of September. This year we will also have an animals in cages section. No entry form needed, but please let the office know what you are bringing.

There will be a hat parade on this day as well. The theme for this is "The circle of Life". Hats are to be designed and decorated by the children - let your child get creative and let's see all the wonderful hats on show day.

Circus Princess Ball is being held on Friday 1st September at Lifepoint Church. It is for women and girls of all ages and its aim is to provide a night of fun and celebration. The event is drug and alcohol free and children under 14 are to be accompanied by an adult. Tickets are on sale, \$5 if purchased before 23 August, or \$10 after that date and are available from Sandra Currie on 021 0239 7431 or at Lifepoint's Mainly Music on Wednesdays from 10am.

Bream Bay Boxing - All ages welcome, Tuesday and Thursday 6.00am to 6.45 am, \$5 per person per session, contact Teuila 022 419 3057 for more details.

The Kauri Museum Settlers Day - The day the museum comes alive and we celebrate and pay tribute to our early Kauri Settlers and Pioneering History. Free entry (Donations accepted) Saturday 7th October. For more information ph 431-7417 or visit www.kaurimuseum.com

Kaipara Tag They are starting a Kaipara Tag module at the Mangawhai Domain in October for our local community and surrounding districts. They are holding a registration/gala day on Saturday 02nd September at the Mangawhai Domain, come along and learn how to play. Kids, Adults mixed, Men and Women competition. Grading day adults teams Tuesday 3rd October. Tag is a fun non-contact sport and the kids will absolutely love it. www.sporty.co.nz/kaiparatag or 027 978 4009

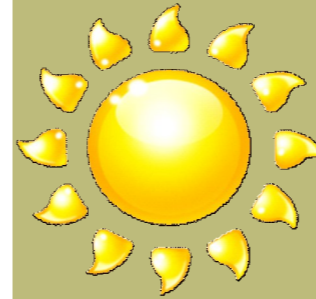
SPORT NORTHLAND



HEALTHY HOME BAKING

Fibre helps us feel full for longer and keeps our digestive system healthy. Increase fibre by replacing 1/2 the white/plain flour with wholemeal flour.

Developed by Sport Waikato 2017



TERM 3

1 Sept - Whitebait connection - Rm 3+4

8th Sept - Yr 5-6 Huanui College talk to children

13th Sept - BoT Meeting 4.30pm

14th Sept - Duffy speaker 1.30pm

20th Sept - Production rehearsal and matinee show

21st Sept - Production evening performance

28th Sept - Howick College music performance to whole school

29th Sept - End of Term 3

16th Oct - Start of term 4

20th Oct - Show day

23rd Sept - Labour day no school

TERM DATES 2017

Term 3 - 24th July to 29 September

Term 4 - 16 October to 15 December

RUAKAKA SCHOOL NEWSLETTER



31st August 2017

Our mission statement

He kura whakamana i ngā ahurea o ngā tamariki, tōkia, tūkia o rātou pūkenga, o rātou manakotanga o rātou auahatanga, poipoia rawatia ka whakanuia e te whānau whānui me te hāpori.

To be a rural school where innovation and cultural identity are embedded, students' individual talents, needs and abilities are nurtured, celebrated and supported by whānau and community.

Tena koutou katoa

NETBALL

We entered three teams into the Whangarei netball competition this year.

Ruakaka Gold were promoted from Section 3 to Section 2 half way through the season and were winners of Section 2, they went through the season with only one loss. Here is the winning team after their final game in terribly wet and cold conditions, well done girls for making us proud!

Ruakaka Purple played 6 v 6 junior netball, a Netball NZ junior netball programme that all netball centres have to adopt. Thank you to Donna who volunteered her time to coach these girls.

Ruakaka Angels, our Year 1 and 2 team, played 4 v 4 junior netball, again Netball NZ programme. There are no placing for the junior teams, but hope they have enjoyed their time on court and hope to see them all on court in 2018.



Whakatauki (proverb) of the Week

*Te toi whakairo, ka ihiihi, ka wehiwehi, ka aweawe tea o katoa
Artistic excellence makes the world sit up in wonder.*

**We love to learn together
Ka aroha tātou ki te ako tāhi**

LOST PROPERTY

We have around 6 boxes of lost property here at school!! It has all been washed and as very little of it has been named it makes it impossible to return to its rightful owner. The children will have an opportunity to look through it and we are hoping parents can come in and claim some of it as well. We are going to have the lost property available for you to go through for the next 2 weeks. Any clothing that isn't claimed after that time will be disputed to our families that need a hand.

INTERSCHOOLS CROSS COUNTRY

We took our top runners from our cross country day down to Maungatoroto to compete in the southern zone interschool cross country. They all represented the school well and the following children were placed:

Brooke Morgan	2nd	10 & 11 year old girls
Abeyon MacDonald	2nd	8 year old boys
Lexia Maunder	3rd	9 year old girls

ENROLMENT ZONE

As I mentioned in the last newsletter, we are currently in the process with the Ministry of Education of creating an enrolment zone for Ruakaka School due to roll growth. The proposed zone was in the Bream Bay News last Thursday and is included in this newsletter. Any submissions need to be in by the 24th of September.

PROPOSED ENROLMENT SCHEME

The Ruakaka School Board is in the process of implementing an enrolment scheme as directed by the Ministry of Education Under section 11H(1) of the Education Act 1989.

All students who live within the home zone described below shall be entitled to enrol at the school.

The proposed zone is:

Travelling along State Highway 1 south from Whangarei, the zone starts at Totara Road and includes all properties on that road. The zone travels overland to include 284 Springfield Road and continues east to 978 Springfield Road. The zone runs east along Ormiston Road until it reaches Kukunui Road; it then travel overland to the intersection where Applecross Road meets Mountfield Road and includes all properties on Mountfield Road east of this intersection.

The zone continues eastward to cross State Highway 1 to include 325 and properties northwards including all properties on Rosythe Road and McLeod Road.

The zone then runs northwards along the coast to meet 478 Marsden Point road. The zone continues overland to include 94 McEwan Road. It continues west along McEwan until it reaches One Tree Point Road to include property 776.

The zone then travels overland to meet the Whangarei Harbour so the zone includes all properties on Hewlett Road, Gilbert Road and Johns Road.

The zone finishes on State Highway 1 at Hewlett Road.

All residential addresses on included sides of boundary roads and no exit roads off included sides of boundary roads are included in the zone unless otherwise stated.

A map is available for viewing in the office foyer.

Special Programmes—Maori Bilingual Unit

- *The school operates an approved bi-lingual programme for students. The Principal, in consultation with the Board, will decide on the number of Maori medium students the school can cater for and will establish a prescribed number of places available in the programme for out of zone students each year.*

Members of the community are invited to make comment regarding this proposed enrolment scheme in writing to: The Board of Trustees, Ruakaka School, 12 Sandford Road, Ruakaka, R D 1, Whangarei 0171, closing 1 month from the date of this notice.

TIRED CHILDREN

Lately we have noticed that many of our children are extremely tired when they come to school. What time are your children getting to bed? Recommended hours of sleep for 3-6 year olds is 10-12 hours per night and for 7-12 year olds it is 10-11 hours per night. Is your child rested enough for ultimate learning to take place?

WET CHILDREN

We have had a lot of children getting wet at morning tea and lunch time lately. We don't have enough spare clothes to give them all a change of clothes. If your child is one of these kids who gets wet and muddy, please pack a spare change of clothes in their bag.

PRODUCTION – “Te Hononga, The Circle of Life.”

Plans are well underway for this year's production and the children are practising every day. Thank you to those of you who have helped with costumes and props. This is such a big job. It is going to be another great show. Remember we are holding two performances this year - one matinee at 12.00pm on Wednesday the 20th of September and the other on Thursday 21st of September at 6.00pm. We are holding two performances because we now struggle to fit everyone in to the evening performance with the school growing so much.

There will be a gold coin donation for both shows.

BILINGUAL CLASSES 2018

Wow! What a great response we have had to this programme. Thank you to those of you who have sent your forms back to school if you would like your child included in the bilingual classes for 2018. The staffing we put in place is very dependent on the numbers for these classes so if you still want your child included and have not yet let the office or myself know, please do this urgently as places are almost filled. Just a phone call is fine.

POSITIVE BEHAVIOUR FOR LEARNING (PB4L)

As you may be aware, Ruakaka School is part of the Positive Behaviour for Learning Programme for the next 3 years. We have a team of staff working together on this throughout the school.

The purpose of our school-wide behaviour support plan is to create an inclusive, safe, supportive and culturally aware environment within our school community. We aim to build positive and respectful relationships that not only encourages academic success, but also supports our tamariki in becoming kind, respectful, independent and lifelong learners.

BREAM BAY COMMUNITY OF LEARNING

Many of you will have heard the news that the four schools in the Bream Bay area – Bream Bay College, Waipu Primary, One Tree Point and Ruakaka – have recently registered with the Ministry of Education to form a Community of Learning – COL – Kāhui Ako. We are hoping to include preschools and our local iwi in this exciting project as well. There is much work to be done to get this up and running but what it will mean is that all schools will be working closer together with agreed achievement challenges. We will keep you informed as things develop further.

Warren Pohatu inspired “Maui and the Sun” Artwork by Room 4

