

NORTHPINE GROWING STRONGER

12 Sandford Rd
Ruakaka
R D 1
Whangarei 0171

Phone:
(09) 432-7503

Fax:
(09) 432-8631

Mobile:
(021) 0233 2267

E-mail:
office@ruakaka.school.nz

Web:
www.ruakaka.school.nz

Find us on Facebook:
Ruakaka Primary
School Friends

Lunches on line:
Thursday \ Friday

Website
www.ruakaka.school.nz



Have you found dub dub yet?? If so fill in a form at the office and pop it in the box.



This month's winner was

COMMUNITY NOTICES

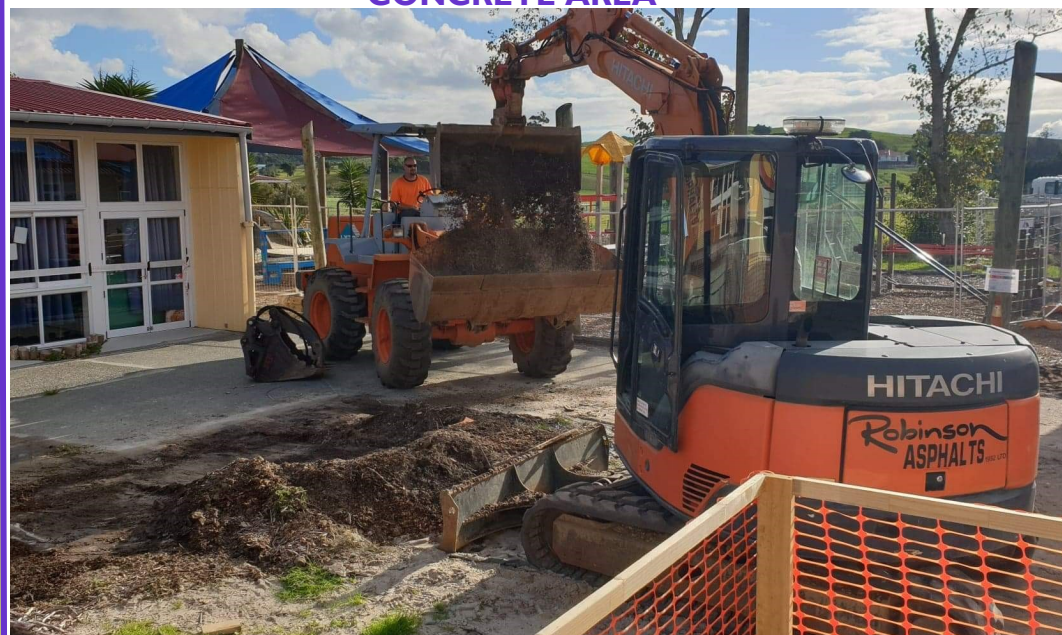
TE MANAWA TAHI - This is a learning support hub where whānau can come in and talk to education professionals about their child's learning needs. This is a free service.

Attached is the timetable for Term Two 2019 Te Manawa Tahī. Any questions or comments please call 0800 52484 256 or email TT.support@education.govt.nz

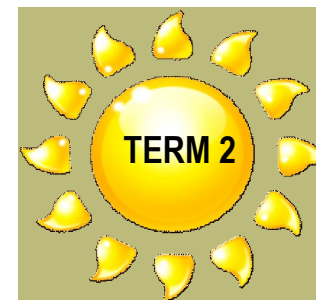
OUR NEW VOLLEYBALL PITCH THANK YOU AARON!



CONCRETE AREA



Te Manawa Tahī Timetable	
Date	Hub Location
15 May 2019	One Tree Point School 97 One Tree Point Rd, One Tree Point
22 May 2019	Ruakaka Primary School 12 Sandford Rd, Ruakaka
29 May 2019	Bream Bay College Peter Snell Rd, Ruakaka
05 June 2019	Life Point Church 300 One Tree Point Rd, One Tree Point
12 June 2019	Bream Bay Community Trust Takutai Pl Ruakaka, Whangarei
19 June 2019	Waipu Primary School 6 Argyle St, Waipu
26 June 2019	One Tree Point School 97 One Tree Point Rd, One Tree Point
03 July 2019	Ruakaka Primary School 12 Sandford Rd, Ruakaka



31 May - Seniors Winter sports at One Tree Point School

3 June - Queen's birthday, NO SCHOOL

10 June until 14 June - Matariki Week

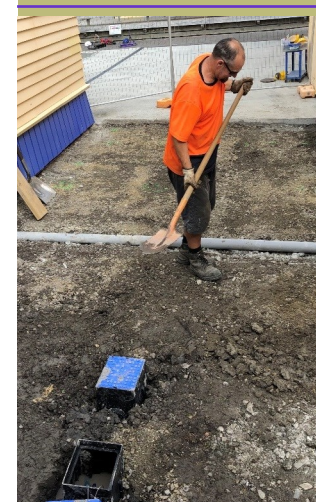
20 June - Parent Teacher Interviews, 3pm until 7.30pm

26 June - Parent Teacher Interviews, 3pm until 5.30pm

5 July - End of term 2

Quote of the week

It always seems impossible until it's done!
Nelson Mandela



TERM DATES 2019

Term 2 - 29 Apr to 5 July

Term 3 - 22 July to 27 Sept

Term 4 - 14 Oct to 12 Dec

Ruakākā School Newsletter



9th May 2019

Our mission statement

He kura whakamana i ngā ahurea o ngā tamariki, tōkia, tūkia o rātou pūkenga, o rātou manakotanga o rātou auahatanga, poipoia rawatia ka whakanuia e te whānau whānui me te hāpori.

To be a rural school where innovation and cultural identity are embedded, students' individual talents, needs and abilities are nurtured, celebrated and supported by whānau and community.

Whakatauki (proverb) of the Week

He aha te kai ō te rangatira? He kōrero, he kōrero, korero!
What is the food of a leader? It is knowledge, It is communication!

Tēna koutou katoa

Wow! The amount of building work going on around the school at the moment is sensational. It's not long before Matua Jacob's new classroom is completed. We also have solar panels going up on the roof as this newsletter is being printed. The concrete area beside the playground is being ripped up and new smooth concrete is going in. That will be great for handball! However, many areas around the school are cordoned off and I would like to take the opportunity to thank our tamariki for being so resilient with the limited space at the moment. I would also like to mention our wonderful caretaker Aaron. He's got a volleyball pitch up and running and also made a softball/T ball pitch too with brand new sports gear ordered and on the way. Thank you Aaron.



We love to learn together
Ka aroha tātou ki te ako tahī

BOARD OF TRUSTEES ELECTIONS

Have you thought about putting your name forward for our Board of Trustees elections? Nominations close tomorrow (10th of May). Election day is 7th June. This is a wonderful way to be involved with our school and gives you a real insight as to how things work. Nomination forms are available from the office in both Te Reo Māori and English.

Trustees

- are active leaders in our schools; We need more people willing to use their skills and experiences for the benefit of students
- have an important role of supporting strong professional leadership and ensuring effective teaching for all students through informed governance.

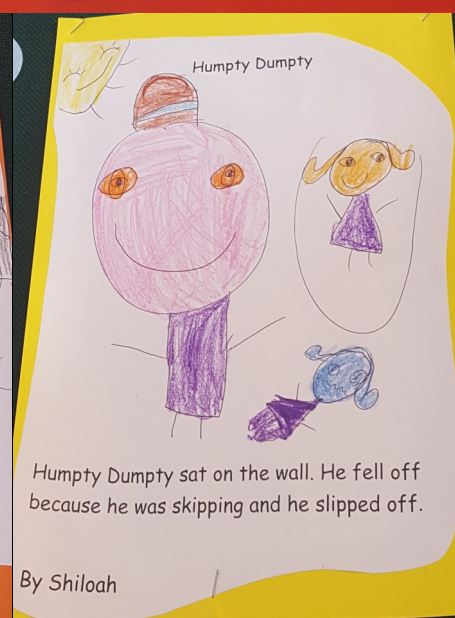
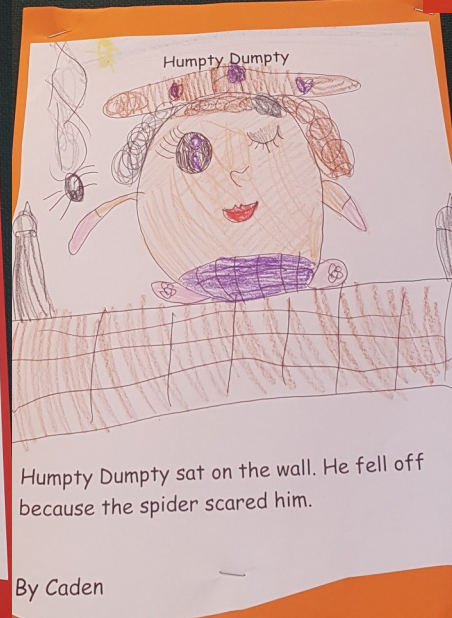
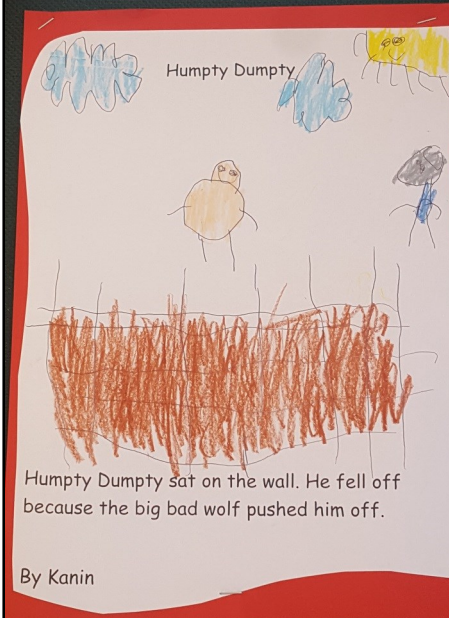
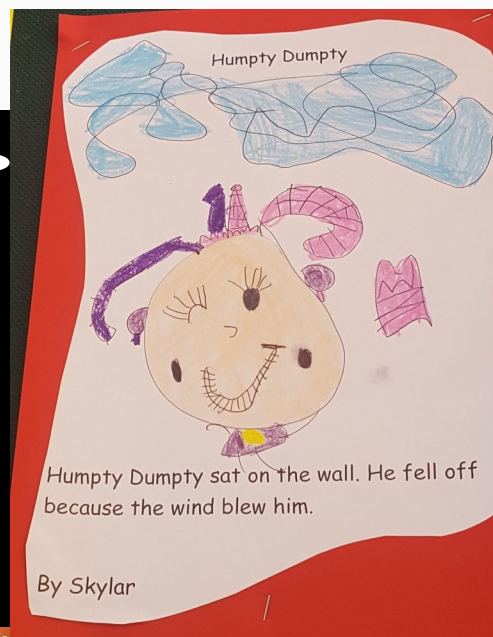
Both parents and people from throughout the wider community can be school trustees. It is important that boards represent the diversity of their school communities to ensure a bright future for all our children. The trustee elections give parents of children at state and state-integrated schools the opportunity to vote for candidates who will make a positive difference for all students at their schools. It is an important responsibility, and all eligible parents should use their vote in an informed way.

"Board members are entrusted by the community to ensure the success of our schools and a bright future for our children. We need an education system where all children are expected to succeed and one where we all take shared responsibility in ensuring this happens. As a member of a school board you can make things happen - you can make a difference."

- Lorraine Kerr, NZSTA President

HUMPTY DUMPTY WRITING BY ROOM 2

You might think that Humpty Dumpty fell off the wall... well this is what we think happened!



MATUA JACOB'S CLASSROOM



MEASLES

We have been notified that measles has arrived in the north. We will send a notice out with more information over the next week

EASTER RAFFLE

How wonderful is our community! We asked for donations for our Easter raffle and had so many items donated that we were able to create 5 prizes. We then asked you to sell tickets (a big ask straight after Gala) and you raised \$1,100 for the School Support Group, what an amazing effort!

Congratulations to our winners:

- 1st prize - Pari whānau
- 2nd prize - Morgan whānau
- 3rd prize - Roswell whānau
- 4th prize - Malota whānau
- 5th prize - Tanner whānau

